

Department of Dermatology

Overview for DAAG Meeting

October 2016

MEDICINE of THE HIGHEST ORDER



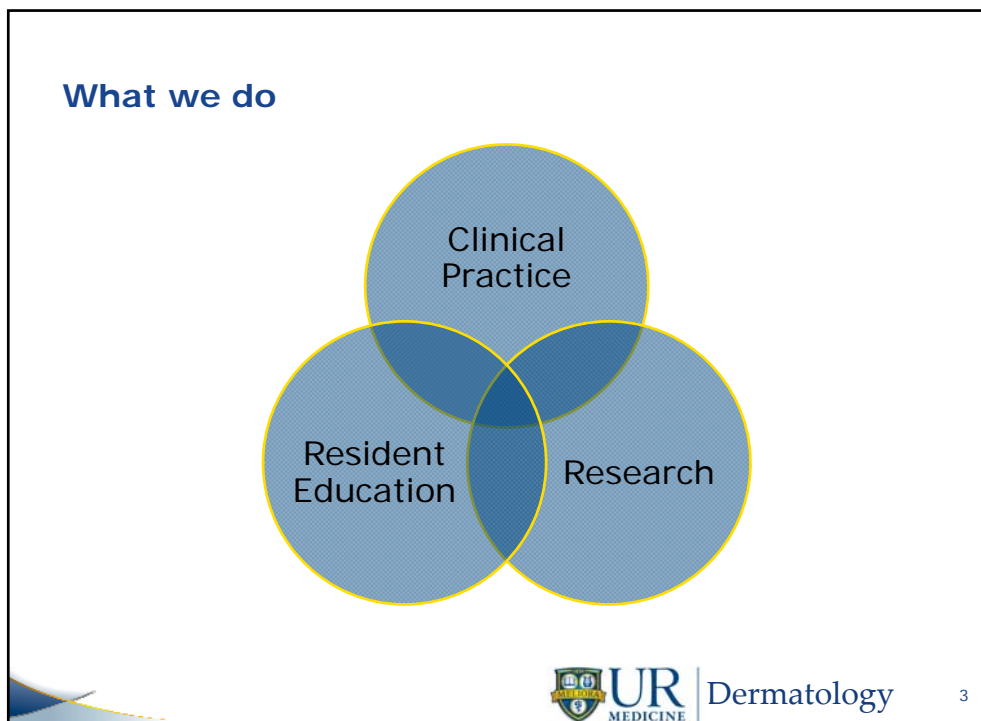
Who we are; UR Dermatology by the numbers

Clinical Faculty	12	42	Staff
Research Faculty	4	8	nurses
Volunteer Faculty	34	1	APP
Residents	13	2	Fellows and Postdocs

44,000 visits annually

revenue **\$15M**





Who influences us internally

Account	%
School of Medicine and Dentistry	X%
Medical Faculty Group	Y%
Strong Memorial Hospital	Z%

Clinical Practice

- Billing oversight
- Centralization efforts
- PARC to Epic
- Finance and Admin

Resident Education

GME

Research

- ORPA & ORACS
- Clinical Trials PAWs

4

Clinical operations

- General derm @ 4 locations
- Mohs surgery @ 2 locations (2 histo labs)
- Cosmetics focused @ 1 location
- DermPath @ 1 location
- Residents working with attendings
- Newest faculty hires are working on models where nurses and MAs team document in Epic

Arrived Appts per Month

5

Where we're going

- Strong push to grow clinically
- wRVUs to feed compensation plan
- Moving to Epic for PARC system
- Telederm is still on the horizon
- Clinical Trials Unit is growing
- Administration is becoming less flat; institutional knowledge disseminating



Questions?





MEDICINE *of* THE HIGHEST ORDER